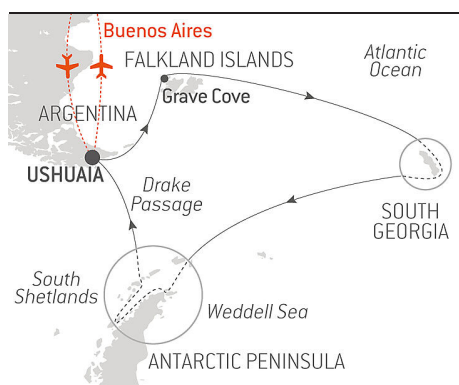


# The Great Austral Loop

From **21/12/2023**  
to **05/01/2024**

Ship: **L'AUSTRAL**

From **Ushuaia**  
to **Ushuaia**



Experience a **magical Christmas** and **New Year's Eve** with PONANT between South Georgia and the Antarctic Peninsula.

Discover the Southern Ocean as you have never seen it before! Embark on a **16-day polar expedition cruise to the highest latitudes**, from the **Falkland Islands to South Georgia** and the immaculate lands of **Antarctica**.

Your expedition to the heart of the **South Atlantic** begins with the exploration of the Falkland Islands: as you sail in this archipelago of 200 islands, you will be escorted by sei whales. Composing the wild beauty of the shorelines are beaches of white sand, jagged cliffs, windswept moors and tall grass swaying with the wind.

Your ship will soon take to the seas once again, to reach the **mountainous island of South Georgia**. It is there, in the midst of gigantic glaciers, that **Sir Ernest Shackleton** miraculously ran aground during the famous Endurance Odyssey in 1916. Today, king penguins, elephant and fur seals that have taken over the black-sand beaches dominated by the tall peaks that reveal the **Scotia Arc**.

You will ultimately land on the frozen shores of the nearly inaccessible **White Continent, Antarctica**. White shades take on a thousand nuances as it covers the icebergs, glaciers, mountains and frozen sea all around you. You will be one of the rare few travellers to have laid eyes on this legendary land, the theatre of the greatest expeditions and the witness of the most extraordinary adventures. Above all, you are in the **realm of the penguins** – Adelie, Gentoo, chinstrap – seals, whales and seabirds that accompany you on this unforgettable trip.

*We are privileged guests in these extreme lands where we are at the mercy of weather and ice conditions. Landings on certain sites and the observation of certain wildlife cannot be guaranteed. They vary from day to day, making each PONANT cruise a unique experience. The Captain and the Expedition Leader will make every effort to ensure that your experience is as rich as possible, while complying with the safety rules and instructions imposed by the IAATO.*



The information in this document is valid as of 20/04/2024

# The Great Austral Loop

## YOUR STOPOVERS :

### USHUAIA

Embarkation 21/12/2023 from 16:00 to 17:00  
Departure 21/12/2023 at 18:00

Capital of Argentina's **Tierra del Fuego** province, Ushuaia is considered the gateway to the White Continent and the South Pole. Nicknamed "**El fin del mundo**" by the Argentinian people, this city at the end of the world nestles in the shelter of mountains surrounded by fertile plains that the wildlife seem to have chosen as the ultimate sanctuary. With its exceptional site, where the Andes plunge straight into the sea, Ushuaia is one of the most fascinating places on earth, its very name evocative of journeys to the unlikely and the inaccessible...

### AT SEA

Arrival 22/12/2023  
Departure 22/12/2023

During your journey at sea, make the most of the many services and activities on board. Treat yourself to a moment of relaxation in the spa or stay in shape in the fitness centre. Depending on the season, let yourself be tempted by the swimming pool or a spot of sunbathing. This journey without a port of call will also be an opportunity to enjoy the conferences or shows proposed on board, depending on the activities offered, or to do some shopping in the boutique or to meet the PONANT photographers in their dedicated space. As for lovers of the open sea, they will be able to visit the ship's upper deck to admire the spectacle of the waves and perhaps be lucky enough to observe marine species. A truly enchanted interlude, combining comfort, rest and entertainment.

### GRAVE COVE

Arrival 23/12/2023  
Departure 23/12/2023

Make your way through the turbulent Woolly Gut strait and emerge in the stillness of **Grave Cove**. Located in the northern edge of **the Falkland Islands**, this bay owes its name to the vestiges of whalers' graves that overlook the beach. As you step off the boat and onto the white-sand beach, you might find yourself escorted by a few hospitable **Commerson's dolphins**, elegantly adorned in black and white. A stroll along the grassy dunes will lead you to a vast plain of lush green grass, tended by a few sheep. On the other side of the island you'll find one of the largest **gentoo penguin** colonies in the area. With some luck, you'll also glimpse a sea lion scouring the waves for his next meal.

### AT SEA

Arrival 24/12/2023  
Departure 25/12/2023

During your journey at sea, make the most of the many services and activities on board. Treat yourself to a moment of relaxation in the spa or stay in shape in the fitness centre. Depending on the season, let yourself be tempted by the swimming pool or a spot of sunbathing. This journey without a port of call will also be an opportunity to enjoy the conferences or shows proposed on board, depending on the activities offered, or to do some shopping in the boutique or to meet the PONANT photographers in their dedicated space. As for lovers of the open sea, they will be able to visit the ship's upper deck to admire the spectacle of the waves and perhaps be lucky enough to observe marine species. A truly enchanted interlude, combining comfort, rest and entertainment.

## SOUTH GEORGIA

Arrival 26/12/2023

Departure 28/12/2023

Aboard your ship, discover **South Georgia**, a region formed by an underwater mountain chain that extends from the Andes to the Antarctic Peninsula. All the wildlife of the Far South can be found there: **king and Gentoo penguins, elephant seals, fur seals...** You might get the chance to discover the majestic glaciers of Gold Harbour and the vast plains of Fortuna Bay. If you are fortunate enough to land at Salisbury Plain, you can expect a wonderful spectacle: more than 300,000 king penguins, which you will recognise by the bright orange mark on their head and neck, have taken up residence there.

## AT SEA

Arrival 29/12/2023

Departure 30/12/2023

During your journey at sea, make the most of the many services and activities on board. Treat yourself to a moment of relaxation in the spa or stay in shape in the fitness centre. Depending on the season, let yourself be tempted by the swimming pool or a spot of sunbathing. This journey without a port of call will also be an opportunity to enjoy the conferences or shows proposed on board, depending on the activities offered, or to do some shopping in the boutique or to meet the PONANT photographers in their dedicated space. As for lovers of the open sea, they will be able to visit the ship's upper deck to admire the spectacle of the waves and perhaps be lucky enough to observe marine species. A truly enchanted interlude, combining comfort, rest and entertainment.

## ANTARCTIC PENINSULA

Arrival 31/12/2023

Departure 02/01/2024

Succumb to the magic of a place unlike any other. To this day, the mythical **Antarctic Peninsula** still holds real fascination and promises its visitors unforgettable moments. Throughout your adventure in this icy realm, you will find yourself in the heart of a **spectacular decor** in subtle shades of blue and white, surrounded by **exceptional wildlife**. Penguins, humpback whales, seals and giant petrels are at home here, as are elephant seals, fur seals, Antarctic minke whales, and orcas. Depending on which sites you will be lucky enough to visit, you may get the chance to observe them and share with them the beauty of these extreme parts.

Each day, based on ice conditions, the Captain and the Expedition Leader will suggest **zodiac outings or landings** to discover the infinite riches of the Antarctic Peninsula. Glaciers, ice floe, tabletop icebergs, mountain peaks that

plunge straight into the sea, volcanic beaches, research stations, enchanting bays, and vestiges of the whaling industry: these are the faces of the Antarctic that will likely reveal themselves to you, in a hushed and surreal atmosphere. You will sail in the wake of Jean-Baptiste Charcot, Adrien de Gerlache and Sir Ernest Shackleton, great Antarctic explorers who, from the 19th century, set out to conquer these remote and uninhabited lands.

## CROSSING THE DRAKE PASSAGE

Arrival 03/01/2024

Departure 04/01/2024

If there is one place, one sea, one waterway dreaded by tourists, researchers and hardened seafarers alike, it is undoubtedly **Drake Passage**. Situated at the latitude of the infamous Furious Fifties winds, between Cape Horn and the South Shetland Islands, it is **the shortest route to connect Antarctica to South America**. Seasoned navigators will tell you that you must earn your visit to the White Continent! As the Antarctic convergence zone where cold currents rising up from the South Pole meet warmer equatorial water masses, Drake Passage harbours a very diverse marine fauna. Don't forget to look to the sky to catch a glimpse of elegant albatross and **Cape petrels**, playfully floating about in the wind around your ship.

## USHUAIA

Arrival 05/01/2024

Disembarkation 05/01/2024 at 07:00

Capital of Argentina's **Tierra del Fuego** province, Ushuaia is considered the gateway to the White Continent and the South Pole. Nicknamed "**El fin del mundo**" by the Argentinian people, this city at the end of the world nestles in the shelter of mountains surrounded by fertile plains that the wildlife seem to have chosen as the ultimate sanctuary. With its exceptional site, where the Andes plunge straight into the sea, Ushuaia is one of the most fascinating places on earth, its very name evocative of journeys to the unlikely and the inaccessible...